



AtoJ

HIRAMEKI

JAPANESE LANGUAGE CLASSES



**HIRAMEKI
JAPANESE
LANGUAGE
CLASSES**

Teaching the language of opportunities since 2008

日本語で広がる

ABOUT US

At AtoJ Hirameki Japanese Language Classes, we are committed to connecting India's brightest talent with Japan's world of opportunities. Our journey began in 2008, offering Japanese language learning at an individual level. A major milestone followed in 2017, when we established Hirameki Solutions India Pvt. Ltd. and in collaboration with ASIA To JAPAN began facilitating structured career pathways for Indian learners. Since then, our mission has remained focused: Empowering individuals for global success. Through immersive language training, cultural insight, and professional mentorship, we prepare students and professionals to excel in Japanese workplaces—not just as employees, but as confident, culturally aware global ambassadors.

OUR IMPACT IN FIGURES

- 🏆 **350+** Students Placed in Japan
- 🏆 **70%** Placements
- 🏆 **1000+** Students Trained Annually



WHY JAPAN? WHY NOW?

Japan is hiring for the future; India is ready to lead it. Japan is home to the world's most advanced industries: robotics, AI, green infrastructure, automotive innovation, space engineering, healthcare tech, and more. With a rapidly aging population and a shrinking workforce, Japan needs **skilled international talent** now more than ever. India has young, ambitious, and tech-driven talent. It is a perfect match.

- 81% of Japanese companies hiring global talent believe India has the strongest future workforce.
- The Japanese language is the key that unlocks the door.

“WE ARE NOT JUST A LANGUAGE INSTITUTE, BUT A JAPAN-READY CAREER LAUNCHPAD.”



CORPORATE NETWORK & HIRING PARTNERS



キャリアの扉

OUR SERVICES

1. Japanese Language Programs

Structured, immersive online and offline classes for all proficiency levels – from N5 beginners discovering the language to N1 advanced learners aiming for professional fluency. We focus on real-world communication, Business Japanese, and JLPT certification while nurturing confidence and cross-cultural competence.

2. Japanese Language Internship Programs

Our 500+ hour flagship internship blends essential theory with real corporate practice. Through immersive online and offline sessions, learners gain first-hand exposure to Japanese work culture, communication, and innovation. We proudly guide students from zero level to confident spoken Japanese in just six months.

3. Career & Placement Support

We don't just teach, we guide your entire professional journey. From career counseling and interview preparation to resume building and onboarding support, we ensure every candidate is industry-ready for placement in Japan's top companies.

4. Workshops & Seminars

Interactive online & offline workshops on business etiquette, workplace culture, and technology trends offer key insights into Japan's professional world.

LEARN JAPANESE, THE SMART WAY

We make you industry-ready. Language is just the beginning.

What makes our learning different?

- Live skill-based training (not textbook-only)
- Native and Japan-trained instructors
- Interview simulations
- JLPT preparation is built into the curriculum
- Work culture coaching that prevents workplace shocks

CAREER PATHWAYS IN JAPAN

Here are some of the Top career routes for international talent:

1. **Engineering** – Civil, Mechanical, Electrical, Robotics
2. **IT & Software** – QA, Development, Support roles
3. **Automotive & Manufacturing** – Core Japanese strengths
4. **Healthcare & Caregiving** – Rising international demand
5. **Hospitality & Retail** – Bilingual global-brand roles
6. **Translation & Localization** – Anime, gaming, media
7. **Education, Training & Corporate Support**

SKILLSETS + JAPANESE = BORDERLESS OPPORTUNITY



日本語で広がる

WHAT OUR STUDENTS SAY

I started learning Japanese from absolute scratch, without knowing a single word in the language. My journey in Japanese has not only taught me a new language, but it has also taught me a new way of thinking. After joining AtoJ Hirameki, I got to meet so many incredible people - my Senseis, Mentors and my Classmates. Everyone is very supportive and inspiring. I am very excited to start this new journey!

Aboli K, PVG's COET, Placed in a Japanese Company



I started learning Japanese on 15 June 2025, and what began as a dream soon turned into an inspiring journey of discipline, learning, and progress. Within just five months, I received an opportunity that I never imagined would come so soon. This was possible because of Hirameki's amazing teachers, their constant support, and the positive learning environment. Truly grateful!

Nomaan P, Pravara Rural Engineering College, Selected by a Leading Japanese Company

Upon commencing my Japanese language studies, I was certain that it would profoundly impact my life. Indeed, it did! From preparing for the interviews to the day of my first flight, I experienced a range of emotions, including joy, sadness, and stress. However, I had the unwavering support of my friends, mentors, and family, which enabled me to achieve a long-held goal.

Vyankatesh P, MMCC, Successfully Placed in Japan



I was on the brink of giving up on Japanese studies. That is when I met Shruti sensei and enrolled in AtoJ Hirameki. It changed me both as a person and as a language learner. Everything happened so quickly. I playfully started preparing for the speech competition, never imagining it would lead to a job. None of this would have been possible without the energy-bomb teachers, and I am simply a by-product of their teachings.

Shriram Jayanth, Chennai Institute of Technology, Placed with a Japan-based Company

キャリアの扉

EXPERIENCES THAT INSPIRE

Q: What made learning Japanese challenging at first?

Realizing it was tougher than I expected! However, consistent practice makes ALL the difference.

Q: What helped you the most during JLPT preparation?

Mock tests, since it helped me understand patterns and boost confidence.

Q: What part of the program impacted you the most?

The cultural lessons and detailed feedback after mock interviews.

Q: What do you value most about AtoJ Hirameki?

Insightful guidance that sharpens your strengths. The teachers' dedication truly opens doors to your dreams.

Q: Any advice for new learners?

It gets tough, but push through because its ABSOLUTELY worth it. Japanese adds real value to your life.

Q: Your proudest moment so far in Japan?

When native Japanese speakers compliment me saying that your pronunciation is so good.



Chinmayi R, Jyothy Institute of Technology
Placed with a Japan-based Company



DAY IN THE LIFE OF A NAITEISHA

Q: What does a typical workday look like in a Japanese company?

The day schedule is from 8:00–17:00. Structured, disciplined, and detail-focused with morning assembly and daily reports.

Q: How do you balance language learning with your daily job responsibilities?

Japanese is essential. I learned it before coming to Japan, but working in a technical company requires adjusting and improving your Japanese constantly. The Japanese you study and the Japanese you use at work can feel very different.

Q: What was the biggest cultural difference you noticed in your first month?

The attention to detail - every small task and every interaction matters.

Q: Which part of your day helps you improve your Japanese the fastest?

Writing the daily report (日報). Submitting it every day—whether working or on leave - helps improve both detail orientation and language skills.

Q: What advice would you give to future students preparing for life in Japan?

Japan is rewarding but can feel lonely at first. Be patient and let things flow naturally.



Yash M, AISSMS Institute of Technology,
Placed with a Japan-based Company



日本語で広がる

LIFE IN JAPAN

Study hard. Work smart. Live beautifully.

Food Culture

Ramen alleys, wagyu grills, konbinis that feel like magic, and healthy lunch bowls – Japanese cuisine is delicious and beautifully balanced.

Technology & Innovation

High-speed trains, precision manufacturing, robotics labs – the future isn't coming but it's already here.

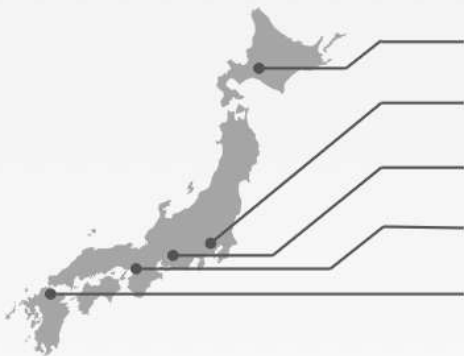
Lifestyle & Safety

Clean streets, efficient systems, punctuality as a lifestyle, and respectful environments where everyone thrives.

Culture & People

Kindness rooted in tradition – bowing, gratitude, teamwork, harmony. You don't just learn the language – you live it.

KEY CITIES FOR INTERNATIONAL STUDENTS



Hokkaido : Tourism & Hospitality

Tokyo : IT & Corporate

Nagoya : Automotive Engineering

Osaka : Manufacturing & Robotics

Fukuoka : Startups & Logistics

YOUR JAPAN JOURNEY WITH US

AtoJ Hirameki Japanese Language Classes. Where language transforms into livelihood.


ENROLL


LEARN
JAPANESE


INTERVIEW
COACHING


JOB
OFFERS


VISA +
RELOCATION
SUPPORT


YOU LAND
IN JAPAN


NEW LIFE
IN JAPAN!

JAPAN SURVIVAL KIT



- Learn how to separate garbage.
- Carry cash, some stores still don't take cards.
- Always keep an umbrella; weather changes fast.
- Bow slightly when greeting or thanking.
- Google Maps works perfectly for trains.

キャリアの扉

DISCOVER JAPAN - QUICK FACTS



World's best public transport
Safe, punctual, and stress-free daily life



200,00+ International students
A welcoming global learning environment



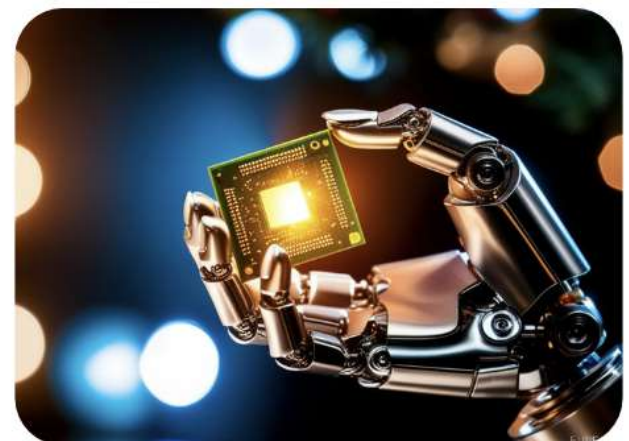
High Life Expectancy
Excellent healthcare and quality of life



High Demand for Skilled Talent
IT, Manufacturing, Electrical, EnTC, Civil



Clean & Efficient Cities
Disciplined society with world-class infrastructure



Global Leader in Technology
Innovation in robotics, AI, automobiles, and electronics

WE GUIDE YOU FROM LANGUAGE LEARNING TO CAREER PLACEMENT

CAREER SUCCESS SPOTLIGHT



Jatin Shetty
PVG College, Pune
Placed in Nishinippon Plant Industries



Kinjal Bhupta
BCNP, Mumbai
Placed in DLTX



Ritesh Shambarkar
Sanjivani College, Kopergaon
Placed in Tachi-S Co. Ltd.



Tanmay Mane
MMCOE, Pune
Placed in Daifuku

JOIN US IN SHAPING THE FUTURE!

 **+91-8431027391 / +91-9021420696 / +91- 9175579495**

 **www.atojhrameki.com**

 **@hramekiclass**

 **AtoJ Hrameki Japanese Language Classes**

 Office 509, Siddharth Towers, Bldg 1,
Opp to Maskawala Cafe, Kothrud, Pune- 411038
info@hrameki.co.in